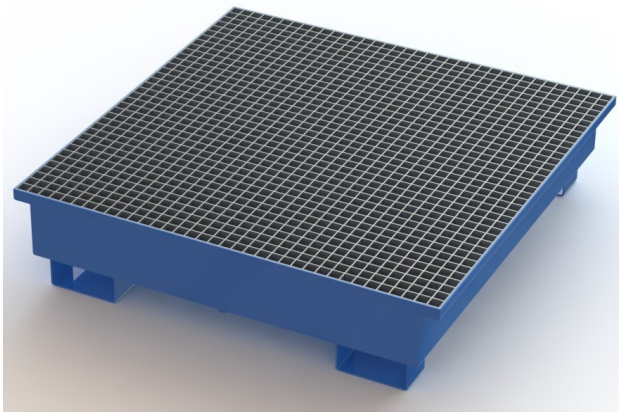




Technical sheet



Steel sump tray for 4 drums with drain screw – ZVO 1212

PROPERTIES:

Material: steel

Colour: RAL 5010 gentian blue

Dimensions: 1210 x 1210 x 290 mm (L x W x H)

Wall thickness: 3 mm

Weight: 85 kg

Collection volume: 210 l

Load capacity:

sump tray: 1 200 kg

grid: 1 150 kg/m²

Capacity: 4 x 200 l drums

Surface treatment:

sump tray: powder paint

grid: hot-dip galvanizing

Suitable use: indoor and outdoor areas