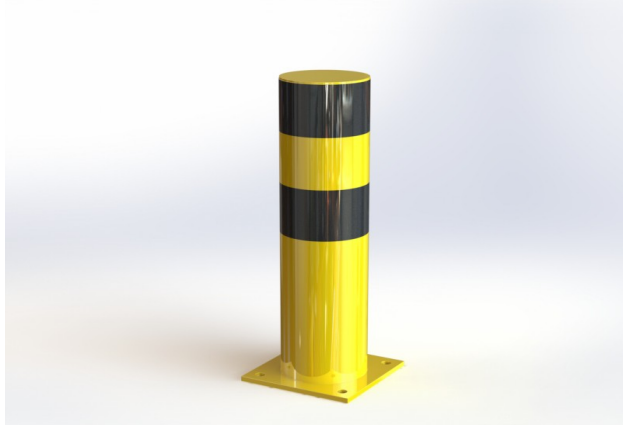


Technical sheet



Protective post – DP QS07

PROPERTIES:

Material: steel

Colour: yellow / reflective black

Handling equipment: heavy forklift

Impact resistance: extreme

Diameter: 159 mm

Height: 600 mm

Wall thickness: 4 mm

Foot dimension: 220 × 220 × 10 mm

Weight: 13 kg

Surface treatment: powder paint

Suitable use: indoor and outdoor areas

PRODUCT DESCRIPTION:

The protective post is made of S235 steel. Surface treatment is solved with powder paint. Yellow traffic colour RAL1023 increases the visibility of the post and warns of obstacles, which contributes to greater safety. The steel feet of the post are made of 10 mm thick sheets. Fixing holes Ø 16 mm. The post has black reflective stripes.

USE:

The protective post defines the space for the movement of hydraulic handling equipment, pallet trucks and sack trucks. It is also used to protect the pedestrian zones of the industrial area.